

Alaska's Centers for Independent Living

FY2020 in Review

WHO WE ARE

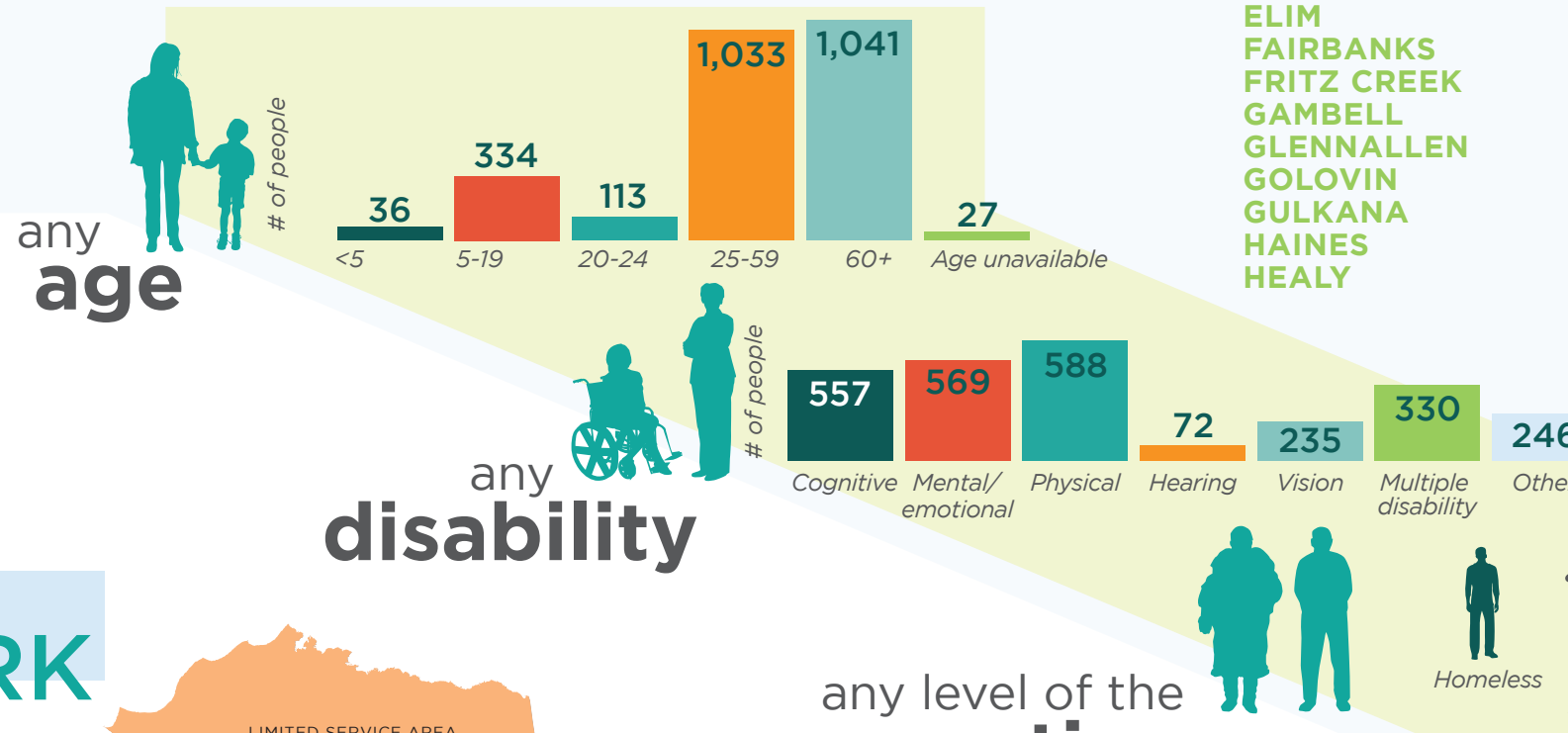
We are **advocates, navigators** and we help people with disabilities **find work**



In FY20, we employed **57** people with disabilities (74% of our staff!)

WHO WE SERVE

We serve people with **complex needs** who are **at risk**



OUR REACH

- AMBLER
- ANCHOR POINT
- ANCHORAGE
- ANGOON
- BARROW
- BETHEL
- BREVIK MISSION
- BUCKLAND
- CLAM GULCH
- COFFMAN COVE
- COPPER CENTER
- COOPER LANDING
- CORDOVA
- CRAIG
- DEERING
- DILLINGHAM
- ELIM
- FAIRBANKS
- FRITZ CREEK
- GAMBELL
- GLENNALLEN
- GOLOVIN
- GULKANA
- HAINES
- HEALY
- HOLLIS
- HOMER
- HOONAH
- HYDABURG
- JUNEAU
- KAKE
- KASAAN
- KASILOF
- KENAI
- KETCHIKAN
- KIANA
- KIVALINA
- KLAWOCK
- KLUKWAN
- KOBUK
- KODIAK
- KOTZEBUE
- KOYUK
- METLAKATLA
- NENANA
- NIKISKI
- NIKOLAEVSK
- NINILCHIK
- NOATAK
- NOME
- NOORVIK
- NORTH SLOPE
- PETERSBURG
- PRINCE OF WALES ISLAND
- PT HOPE
- SAVOONGA
- SELAWIK
- SELDOVIA
- SEWARD
- SHAKTOOLIK
- SHISHMAREF
- SHUNGNAC
- SITKA
- SKAGWAY
- SOLDOTNA
- ST MICHAEL
- STEBBINS
- STERLING
- TALKEETNA
- TELLER
- TENAKEE SPRINGS
- THORNE BAY
- TOK
- UNALAKLEET
- VALDEZ
- WALES
- WASILLA
- WHITE MOUNTAIN
- WRANGELL
- YAKUTAT
- YUKON-KOYUKUK

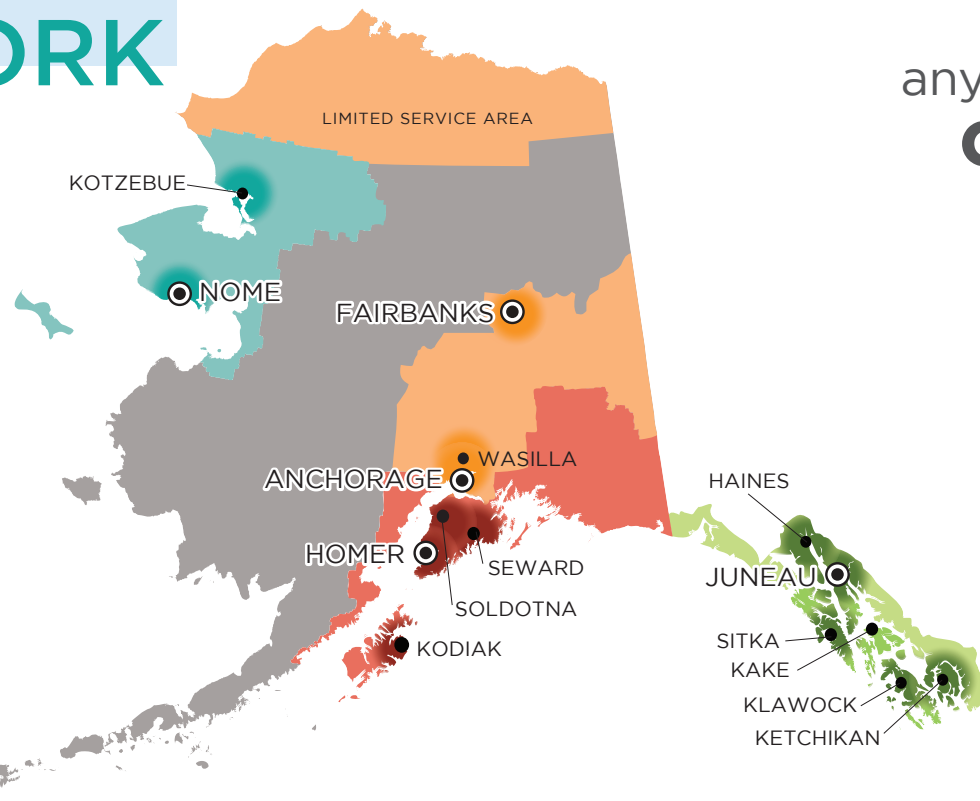
WHERE WE WORK

CIL SERVICES

- Access Alaska - Southcentral/Interior
- Arctic Access - Northwest
- Independent Living Center (ILC) - Gulf Coast
- Southeast Alaska Independent Living (SAIL) - Southeast
- Unserved Area

OFFICE LOCATIONS

- Regional Headquarters
- Current Satellite Offices
- Concentrated program impact area



any level of the **continuum** of care
(Living status at intake)

WE BELIEVE

Individuals and their families, when **empowered with knowledge** and tools, are best positioned to make the right decisions for themselves and their families.

The **healthiest, most vibrant** communities are those that fully integrate people with disabilities.

“After my accident, I didn't want to be a burden to my family and friends. But I have found that Independent Living has made life so it is just about normal. Being able to be home with my wife and kids is the best thing in the world. **Independent Living is everything to me.**”



WHAT WE DO



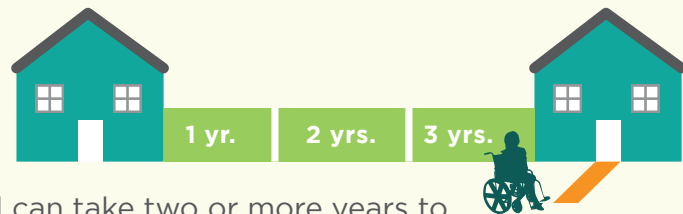
We support individuals and families in their efforts to improve their independence and advocate for systems changes that help Alaskans with disabilities remain in their own communities.

We delivered **7,484 services** and worked with **2,584 consumers** who accomplished **917 goals**

consumer goal setting

is central to our service model

Consumers set their own goals and we support them in **achieving their independence.**



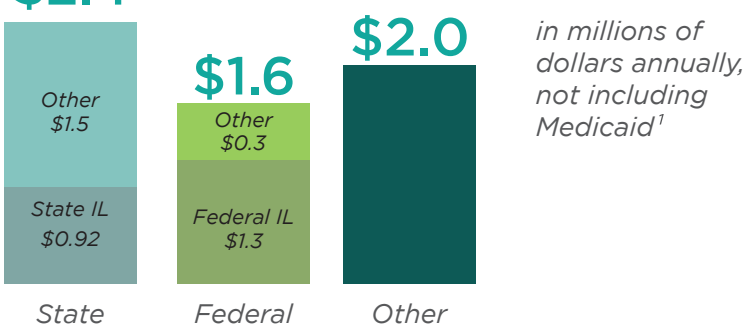
A home modification goal can take two or more years to achieve and cost \$2,500 to \$25,000, but the benefits can help someone **remain in their home** for **years** and even **decades.**

CORE SERVICES

1. Advocacy
2. Information & Referral
3. IL Skills Training
4. Peer Support
5. Transition Services

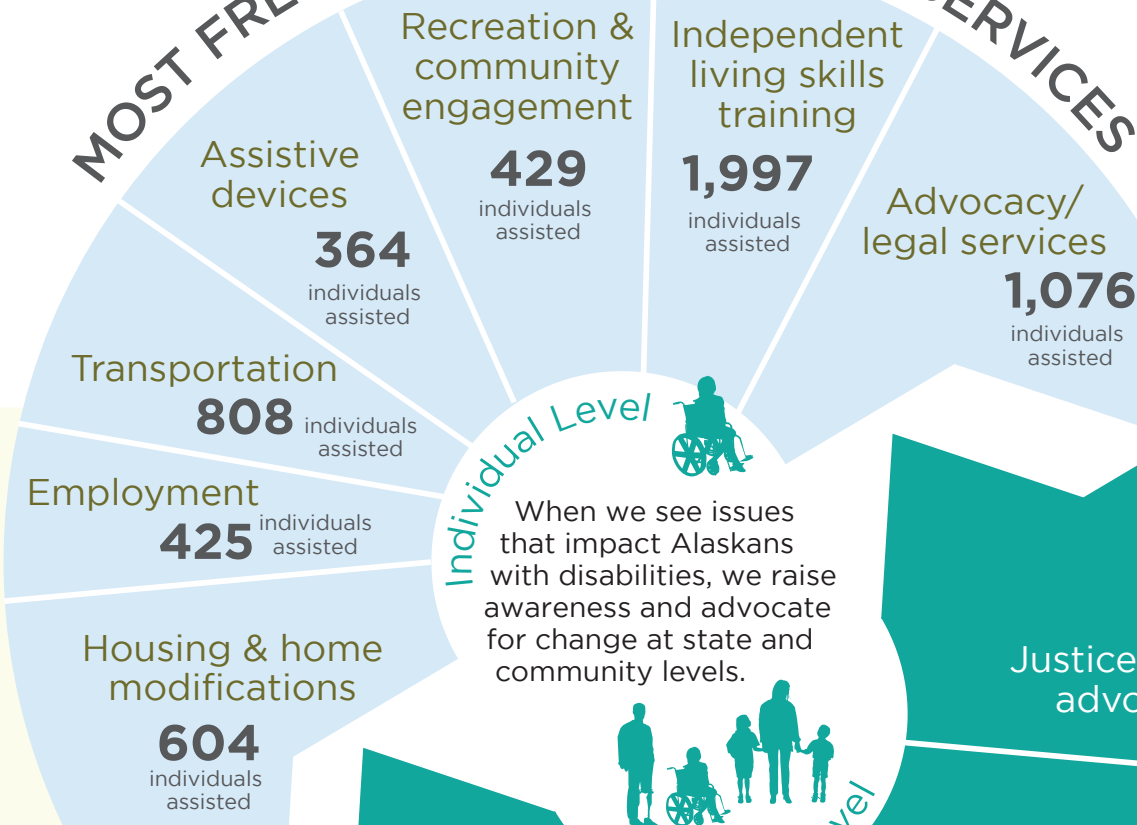
“Helping to inform and navigate what disability services are available is the first step towards **empowering individuals and their families.**”

HOW WE ARE FUNDED



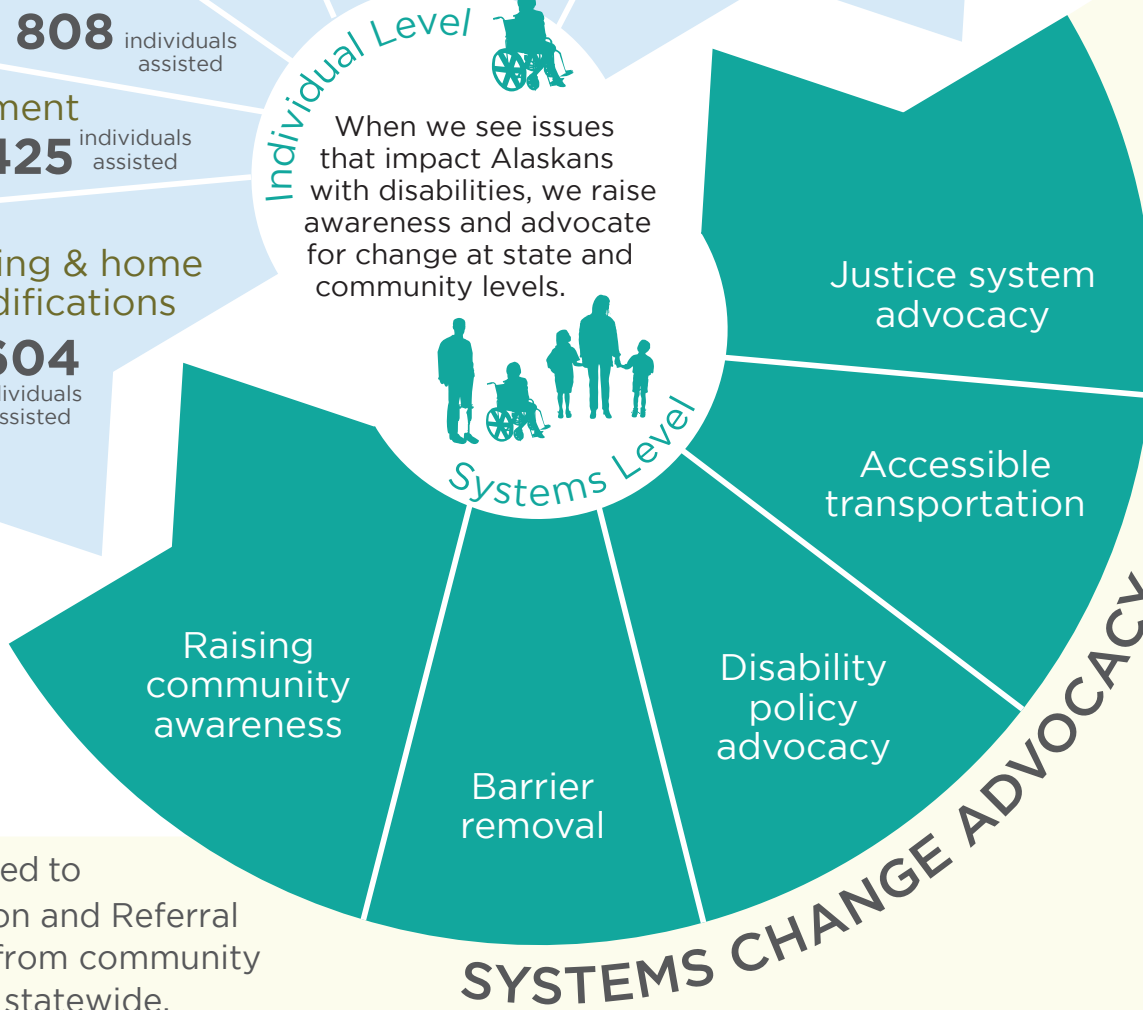
¹This document available in alternate formats. All data provided by Alaska's Centers for Independent Living unless otherwise noted. In FY20, Access Alaska received \$4,751,017 in Medicaid revenue for services rendered. ²Alaska DHSS Division of Senior and Disabilities Services (SDS) Continuum of Care Cost Analysis. The average costs are based on FY 2020 data. ³Assisted living home costs are based on FY20 data from Alaska DHSS, Division SDS.

MOST FREQUENTLY PROVIDED IL SERVICES



Individual Level
When we see issues that impact Alaskans with disabilities, we raise awareness and advocate for change at state and community levels.

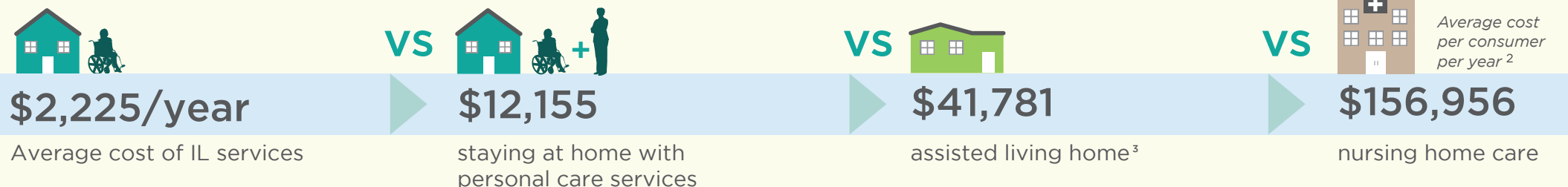
Systems Level



Additionally, we responded to **8,624** Information and Referral requests from community members statewide.

independent living services: low cost, high value

Last year, we helped transition and divert **87 people** from nursing homes to home and community based settings, saving **\$12,510,332** of public funds.



OUR RESULTS

Community-Based Living



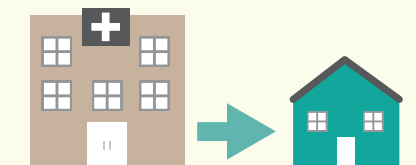
The vast majority of our consumers who are living in their home or apartment at intake are able to maintain or improve their living situation with our assistance.

Transition to Community-Based Living



Many consumers who are homeless/near homeless or living with family and ready to transition at intake are able to improve their living situation with our assistance.

Relocation to Community-Based Living



Many consumers who are in a nursing home or institution or at risk of, at intake are able to return to/remain in their communities with our assistance.